



OSHAB: PPRS Update January 2007

Nadine Funk, OPIC Managing Director
Phone: 519-993-7585 Fax: 519-272-2215 nadineopic@hurontel.on.ca

OSHAB, the OPIC Swine Health Advisory Board, has a mandate to:

“To take a leadership role for major swine health issues in Ontario by:

- *Providing direction for primary research and resource allocation*
- *Advancing industry communication*
- *Fostering (encouraging) collaboration among sectors and jurisdictions.”*

The goal of the original three year PPRS Project was to develop an understanding how PPRS is moving and changing among herds in Ontario, in order to develop effective control and elimination strategies.

The PPRS project is a comprehensive one and as such has a number of initiatives underway. The following is a brief update for some of the key PPRS related OSAHB initiatives.

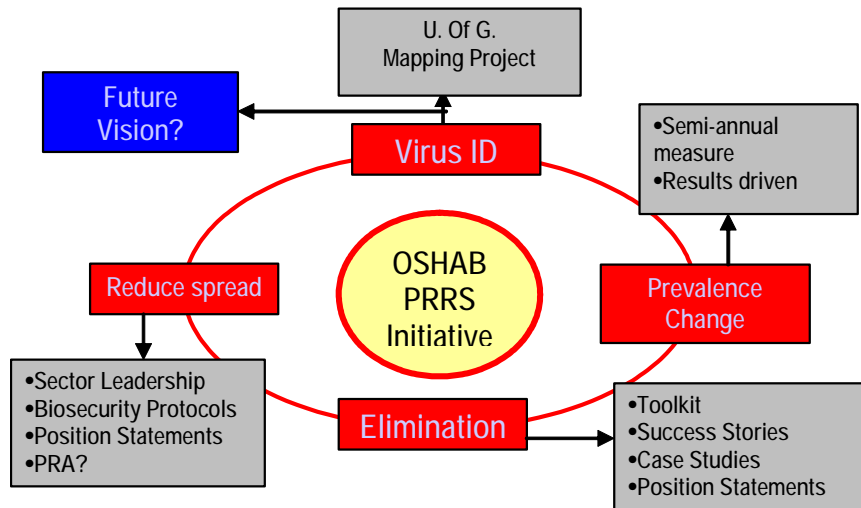


Figure 1: A Schematic Representation of the current PPRS Project Initiatives

Project One: U of G Mapping Project

Project one; involving PPRS sequencing and GPS mapping is underway. Maps identifying PPRS virus sequences relative to postal code are posted on a website accessible to veterinarians. Some preliminary data has been presented to industry.

Benchmarking:

OSHAB has initiated a benchmarking project to measure PPRS virus prevalence, success of elimination strategies and provide an objective basis for calculating economic impact of disease in Ontario. Changes in prevalence and impact will essentially serve as a score card for industry disease control/elimination initiatives. Prevalence data will measure PPRS virus, be reported semi-annually and will be classified according to barn flow (ex. Farrow-finish, farrow-wean, etc). Mortality data for finisher barns will be reported quarterly. A summary report from this first data collection period is presented below.

Table 1: PRRS Prevalence by Barn Type as at September 30th 2006 (# of Barns)

Type of Barn	Positive	Negative	Unknown
Sow	141	101	118
N-F	163	102	180
Total	304	203	298
	38%	25%	37%

PRRSv Elimination Tool Kit:

Development of this tool for producers and industry to use to help with PRRSv elimination at the herd level is well underway. This tool kit will be a centralized “go to” source of information on PRRSv elimination strategies at the herd level which have been critically evaluated for scientific merit and will include sufficient detail to assist with effective decision making by producers.

Case Studies

Case studies which involve real-time reporting from specific Ontario farms are slated for publication in Better Pork starting in spring 2007. The concept behind these case studies is to show meaningful production/performance data in the context of success and failure for PRRS control/elimination strategies.

Risk Assessment

OSHAB is arranging a training session for veterinarians on the Risk Assessment program endorsed by the American Association of Swine Veterinarians (AASV) to occur in Ontario in early 2007. OSHAB is investigating hiring two students to help implement the PRRS Risk Assessment Tool in Ontario on a larger number of farms during the summer of 2007.

Sector Leadership:

OSHAB is actively working with specific sectors to develop biosecurity protocols and position statements which will be a key element for delivering PRRSv control and elimination strategies.

Three position statements and several concepts for position statements have been drafted by OSHAB and will form the basis for discussion at a series of sector meetings planned for the first quarter of 2007. The sector reviews and discussions will be used to finalize workable position statements for the Ontario industry to strive for. Identifying initial actions for an implementation plan will also be part of these sector meetings.

The following position statements have been drafted by OSHAB;

Industry Transport Biosecurity

Every pig transporter has documented protocols and audits for:

- washbay sanitation and usage criteria
- trailer/truck sanitation and usage criteria
- driver biosecurity measures
- load out sanitation and biosecurity measures

Barn Entrance

Every pig barn has a minimum of a Danish entrance.

Gilt Isolation

Sow herds must have a gilt isolation.

Concepts for having position statements regarding virus identification, vaccine usage and gilt/semen source have been raised and will also be discussed during sector meetings.

Watch for notice of upcoming sector meetings.